

Main board Replacement

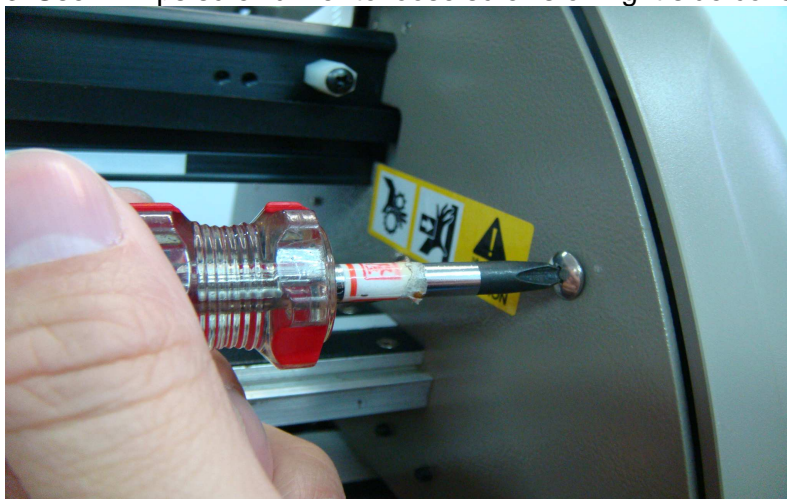
Tools Required:

- Phillips screwdriver

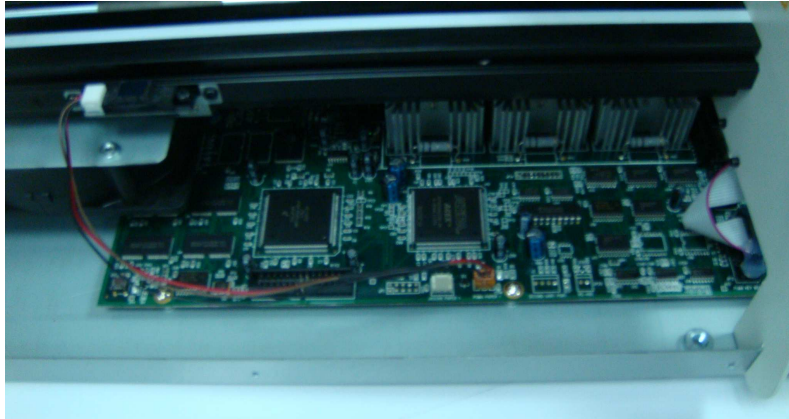
1. Turn off machine and un-plug AC cable
2. Use Phillips screwdriver to loose screws on Front platen extension and Rear platen extension.



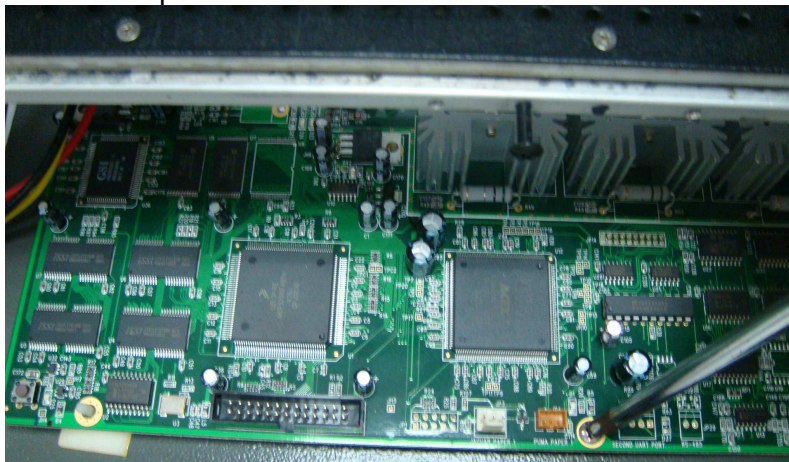
3. Use Phillips screwdriver to loose screws on right side cover and remove the cover



4. Disconnect all cables.



5. Use Phillips screwdriver to loose four screws on main board.



6. Change Main board.

